



# Top Mount, Single Keyway Twin-Wired with Molded Mini-Change® Home Run Connector

Molded home run Mini-Change connector provides flexibility  
Twin-Wired inputs for maximum wiring density  
Accommodates 4-wire DC sensors, pin #2 load wired sensors

<b>NEW</b>	<b>4 Port</b>	<b>8 Port</b>
<b>HOME RUN CONNECTOR MALE FACE VIEW</b>		
<b>HOME RUN CONNECTOR PINOUTS</b>	1- n/c 2- n/c 3- port #4 load #1 4- port #2 load #2 5- V- 6- port #2 load #1 7- V+	8- port #3 load #2 9- n/c 10- n/c 11- n/c 12- gnd 13- n/c 14- port #4 load #2 15- port #1 load #1 16- port #3 load #1 17- n/c 18- n/c 19- port #1 load #2

FUNCTIONAL WIRING	MPIS SINGLE KEYWAY DUAL INPUT WITH MOLDED HOME RUN CONNECTOR				
	FIG		FIG		
<b>PNP SCHEMATIC, FIG 1</b> 	WITH MOLDED CONNECTOR, 5M PUR				
	4	BTY412P-FBP-05	5	BTY812P-FBP-05	
	WITH MOLDED CONNECTOR, 10M PUR				
	4	BTY412P-FBP-10	5	BTY812P-FBP-10	
	<b>NO LED SCHEMATIC, FIG 2</b> 	WITH MOLDED CONNECTOR, 5M PUR			
		4	BTY4120-FBP-05	5	BTY8120-FBP-05
WITH MOLDED CONNECTOR, 10M PUR					
4		BTY4120-FBP-10	5	BTY8120-FBP-10	
<b>NPN SCHEMATIC, FIG 3</b> 	WITH MOLDED CONNECTOR, 5M PUR				
	4	BTY412N-FBP-05	5	BTY812N-FBP-05	
	WITH MOLDED CONNECTOR, 10M PUR				
	4	BTY412N-FBP-10	5	BTY812N-FBP-10	

	MALE (STRAIGHT) FEMALE (STRAIGHT) DOUBLE-ENDED HOME RUN CABLES EXTENSIONS			
HOME RUN CABLE 5M	6	333030P80M050	6	333030P80M050
HOME RUN CABLE 10M	6	333030P80M100	6	333030P80M100

	FEMALE RECEPTACLES 30CM LEADS TO ACCEPT HOME RUN CABLE EXTENSION			
FEMALE RECEPTACLE		3R3N3OE80C300		3R3N3OE80C300

\*Use 5 pole male Micro-Change® M12 cordsets page 94 to connect to these MPIS ports  
\*See page 84 for receptacle dimensions and specifications

# Specifications



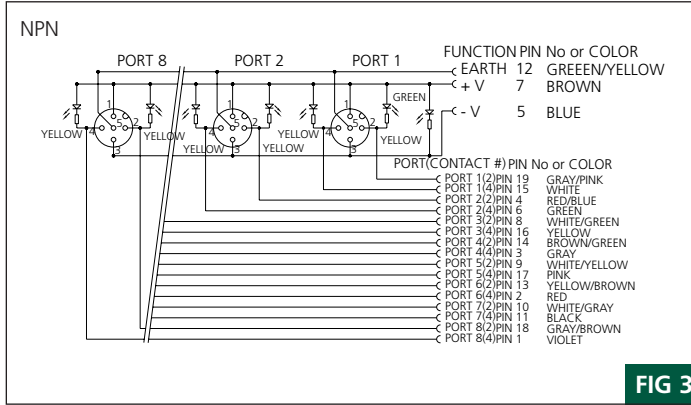
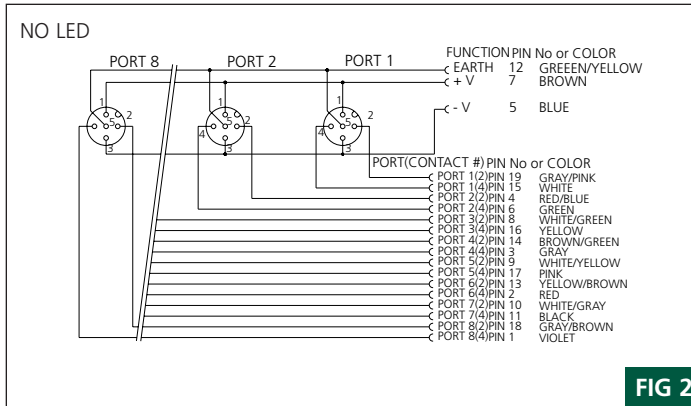
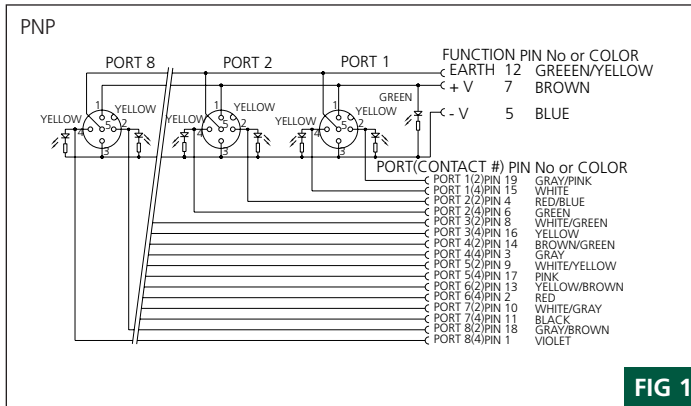
**MECHANICAL**  
 INSERT: PBT  
 HOUSING: PBT  
 RECEPTACLE HOUSING: NICKEL-PLATED BRASS  
 ID LABEL: ABS

**HOME RUN CONNECTOR CABLING**  
 BLACK, #18 AWG (.75mm<sup>2</sup>) & #22 AWG (.34mm<sup>2</sup>), PUR JACKET & PVC CONDUCTOR INSULATION OVER, 42 X .15mm (#18) AND 42 X .10mm (#22) COPPER STRANDING  
 OUTSIDE DIAMETER: 0.39" (10mm)

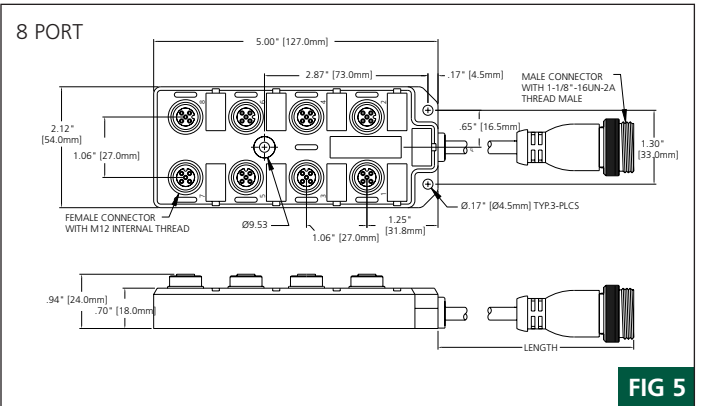
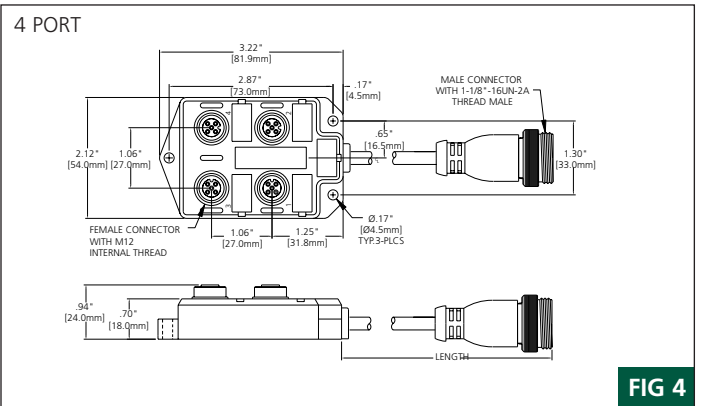
**ELECTRICAL**  
 VOLTAGE RATING: 10-30V DC  
 AMPERAGE: 2A PER PORT, 12A MAX PER UNIT  
 INDICATING LIGHTS: GREEN LED-POWER, YELLOW LED-FUNCTION

AVERAGE LED EXPECTANCY: 100,000 HOURS  
**ENVIRONMENTAL**  
 PROTECTION: IP68, NEMA 6P  
 AMBIENT OPERATING TEMPERATURE: -13° TO 194° F (-25° TO 90° C)

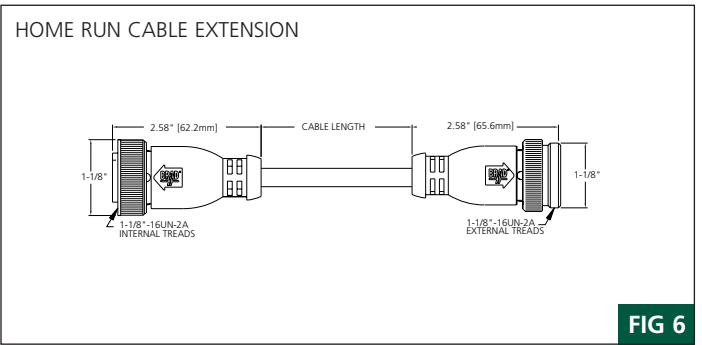
## SCHEMATICS



## MECHANICALS



## FEMALE/MALE EXTENSION



Standard Accessories - Sufficient marking labels and (2) closure caps  
 \* Other Micro-Change MPIS accessories - see page 299