

3P to 5P



Receptacles-Back Panel Mount Single Keyway M12

#18 AWG PVC 1 meter leads - DC color code, epoxy potted
Black anodized aluminum shell
Easy installation and keyway orientation

	3P	4P	5P
FEMALE FACE VIEW			
COLOR CODE	1- brown 2- not used 3- blue 4- black 5- not used	1- brown 2- white 3- blue 4- black 5- not used	1- brown 2- white 3- blue 4- black 5- gray
VOLTAGE	250V AC/DC	250V AC/DC	250V AC/DC
CURRENT	4A	4A	4A
CONDUCTOR	#18-3	#18-4	#18-5

FEMALE	FIG	RECEPTACLES WITH #18 AWG PVC LEADS 1 METER LONG		
BACKPANEL MOUNT	1	8R3B00A16M010	8R4B00A16M010	8R5B00A16M010

CATALOG OPTIONS

Use the following chart to modify your part's specifications

8R3B00A16M010

LEAD LENGTH	
2 METER	020
3 METER	030

Specifications



MECHANICAL

SHELL: BLACK ANODIZED ALUMINUM
 INSERT: NYLON 6/6
 CONDUCTOR: #18 AWG WITH PVC INSULATION
 OVER 26 X #30 COPPER STRANDING,
 300V, UL STYLE 1569, CSA TRSR-64
 O-RING: NITRILE RUBBER
 GASKET: NITRILE RUBBER

ELECTRICAL

VOLTAGE RATING: 250V AC/DC
 3P - 4A
 4P - 4A
 5P - 4A

ENVIRONMENTAL

PROTECTION: IP 65, NEMA 4
 AMBIENT OPERATING TEMP: -4° TO 176° F (-20° TO 80° C)

CERTIFICATIONS

UL: UL LISTED, FILE NO. E152210
 CSA: CSA CERTIFIED, FILE NO. LR6837

RECEPTACLE DIMENSIONS

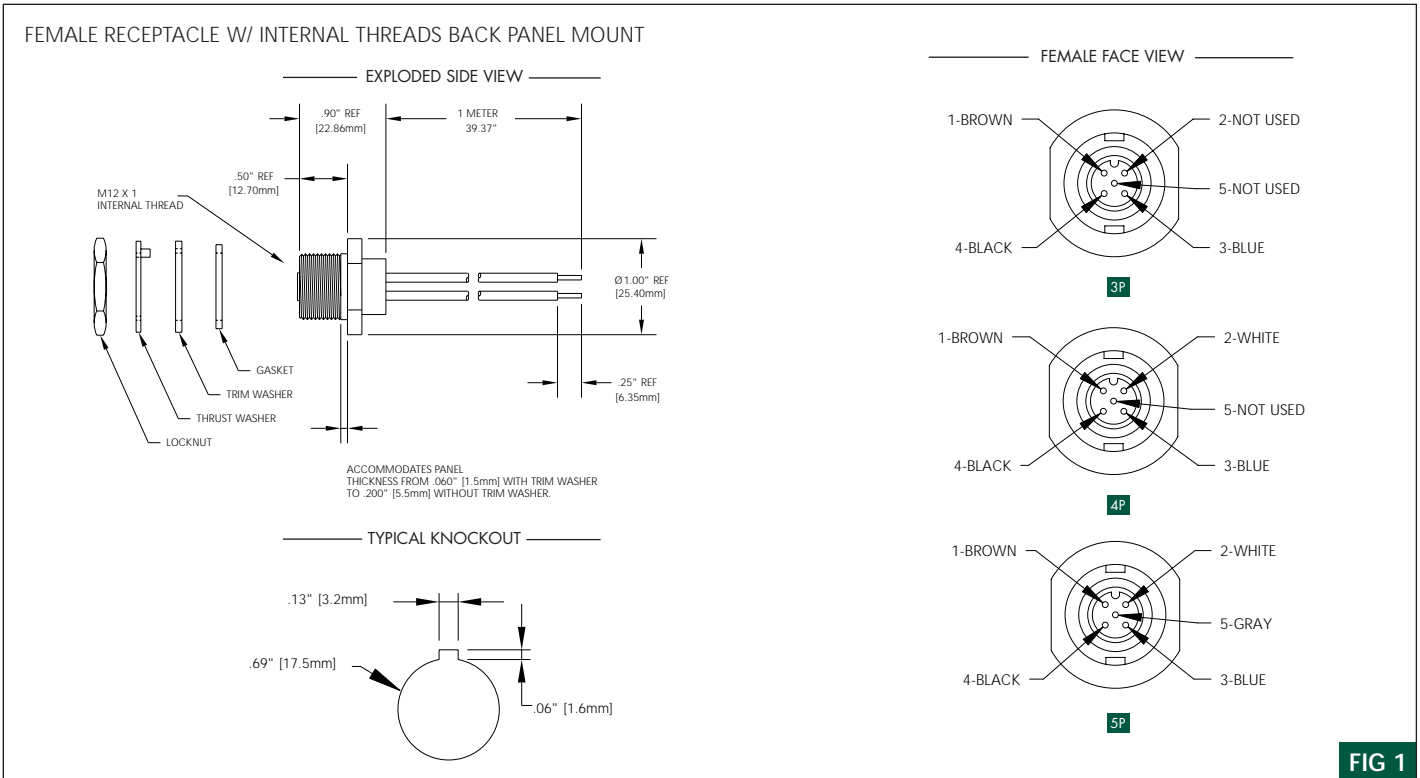


FIG 1