



Single & Double-Ended Cordsets

#18 AWG yellow TPE universal high flex cable – auto color code
 Excellent chemical-, oil- and weld slag-resistance
 Low-resistance contact design with gold/palladium nickel plating

NEW	3P	5P
FEMALE FACE VIEW		
COLOR CODE	1- green-gnd 2- red w/ black trace 3- red w/ white trace	1- red w/ white trace 4- red w/ yellow trace 2- red 5- red w/ black trace 3- green-gnd
VOLTAGE	300V AC/DC	300V AC/DC
CURRENT	10A	5.6A
CONDUCTOR	#18-3	#18-5

FEMALE	FIG	SINGLE-ENDED CORDSETS WITH #18 AWG TPE CABLE 6 FEET LONG	
STRAIGHT	1	103000K02F060	105000K02F060
90°	2	103001K02F060	105001K02F060
MATING RECEPTACLE*	4	1R3006A17A120	1R5006A17A120
FEMALE/MALE	FIG	DOUBLE-ENDED CORDSETS WITH #18 AWG TPE CABLE 6 FEET LONG	
STRAIGHT/ STRAIGHT	3	113020K02F060	115020K02F060

CATALOG OPTIONS

*See Page 58 for additional Mating Receptacles

Use the following chart to modify your part's specifications

103000K02F0601

CABLE LENGTH

12'	120
20'	200

COUPLING NUT

STAINLESS STEELADD 1
NON-METALLICADD 2

Specifications



CONNECTOR DIMENSIONS

FEMALE STRAIGHT

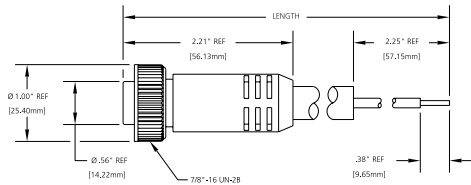


FIG 1

FEMALE 90°

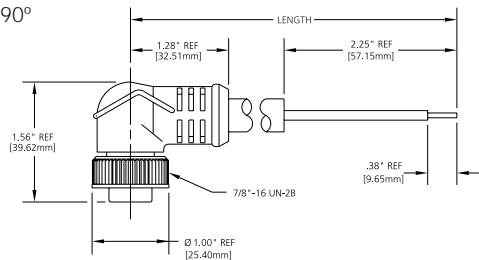


FIG 2

FEMALE STRAIGHT/MALE STRAIGHT

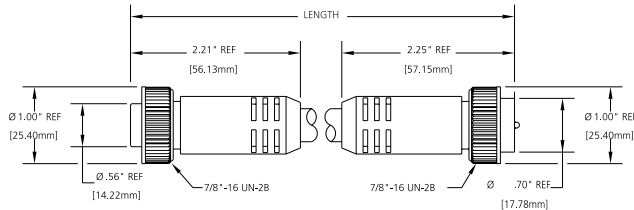
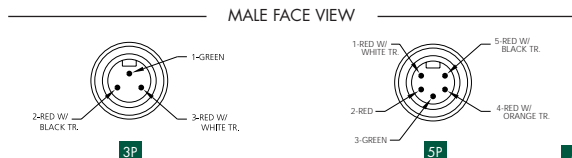


FIG 3



- MECHANICAL**
 CONNECTOR FACE: PVC - UL STD 94 - V0
 MOLDED BODY: PVC - UL STD 94 - V0
 COUPLING NUT: ZINC DIECAST W/ BLACK EPOXY COAT, OPTIONAL STAINLESS STEEL TYPE 303 OR NON-METALLIC GRAY NYLON 6/6
- CABLE:**
 YELLOW, #18 AWG, TPE JACKET & PVC CONDUCTOR INSULATION OVER 41 X #34 COPPER STRANDING, 300V, UL STYLE 20626, CSA AWM I/II A/B
- OUTSIDE DIAMETER:**
 3P - .26" (6.6mm)
 5P - .30" (7.6mm)
- ELECTRICAL**
 VOLTAGE RATING: 300 V AC/DC
 AMPERAGE: 3P - 10A
 5P - 5.6A
- ENVIRONMENTAL**
 PROTECTION: IP 68, NEMA 6P
 AMBIENT OPERATING TEMP: -4° TO 221° F (-20° TO 105° C)
- CERTIFICATIONS**
 UL: UL RECOGNIZED, FILE NO. E46237
 CSA: CSA CERTIFIED, FILE NO. LR6837

RECEPTACLE DIMENSIONS

MALE STRAIGHT WITH 1/2" - 14NPT THREADS

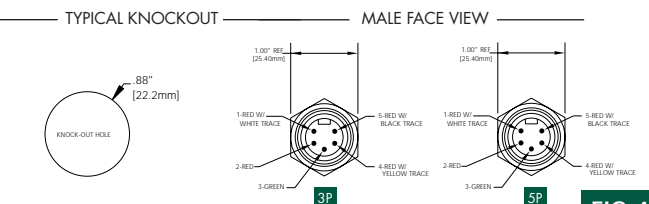
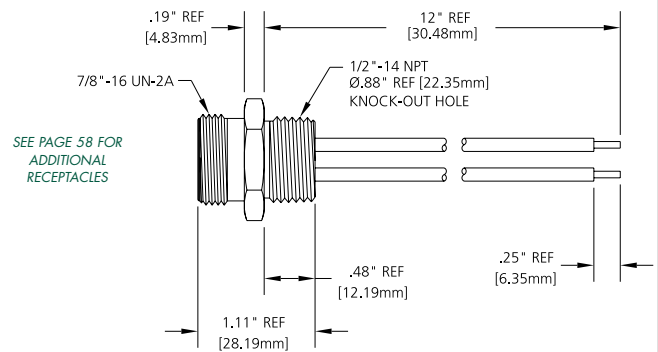


FIG 4

CHEMICAL & OIL-RESISTANCE CHART - TPE CABLE

ACIDS & BASES	PERFORMANCE	OILS & FUELS	PERFORMANCE
SULFURIC ACID 30%	EXCELLENT	ASTM OIL 1,2, OR 3	EXCELLENT
NITRIC ACID 10%	EXCELLENT	TRIMSOL	EXCELLENT
SODIUM HYDROXIDE 10%	EXCELLENT	SIMEOL	EXCELLENT
AMMONIUM HYDROXIDE 10%	EXCELLENT	MOBIL OIL DTE 24 OR 26	EXCELLENT
HYDROCHLORIC ACID 20%	EXCELLENT	KEROSENE	EXCELLENT
GLACIAL ACIDIC ACID	GOOD	TRANSFORMER OIL	GOOD